

# BÔVELL

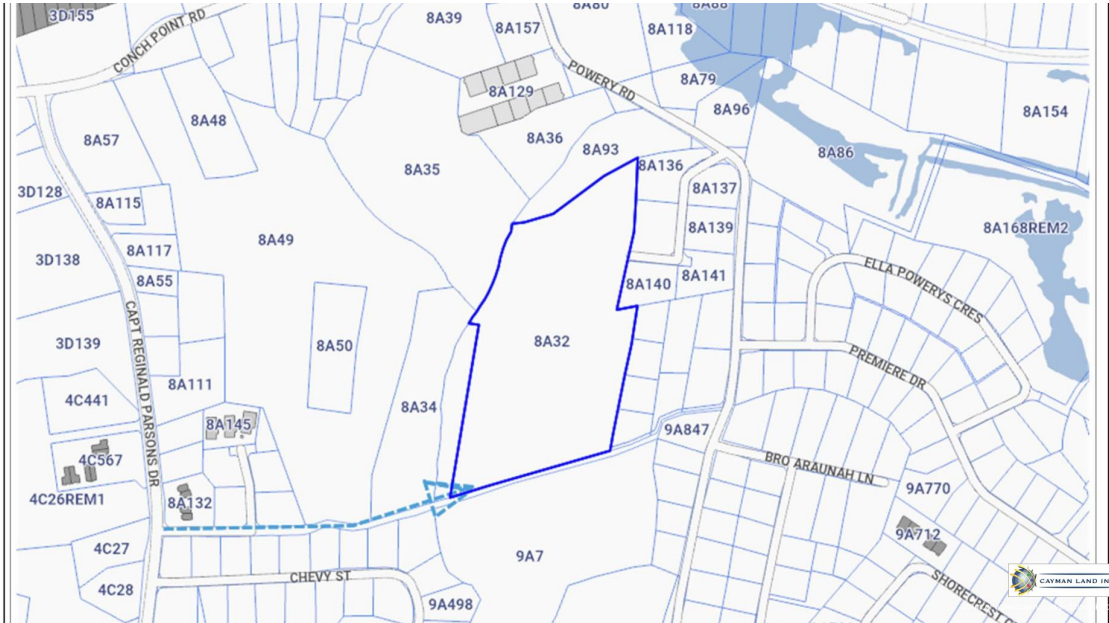


## FOR SALE

KYD\$6,500,000

Pending/Conditional

## 11 Acre West Bay Development Land - Massive Reduction!



11 Acres of prime land for development, this parcel will have a roadway from Capt Reginald Parsons Drive for access as indicated by blue dotted line. Average height ASL is 6ft.

Location: West Bay  
MLS: 415717



Contact James  
james.bovell@bovell.ky  
+1 (345) 945 4000

# BÔVELL



2024 © RE/MAX Cayman Islands. All rights reserved. Proud member of CIREBA.

**RE/MAX**  
CAYMAN ISLANDS

Each office is independently owned and operated. Member of CIREBA and NMLS.

The information contained herein has been furnished by the owner(s) and/or their nominee and represented by them to be accurate. RE/MAX Cayman Islands, its agents and employees disclaim any liability or responsibility for any inaccuracies, errors, or omissions in the represented information. All the information contained herein is subject to errors, omissions, price changes, prior sale, or withdrawal, without notice and is at all times subject to verification by the purchaser(s).

# 11 Acre West Bay Development Land - Massive Reduction!

## ADDITIONAL INFORMATION

Title

11 Acre West Bay Development Land - Massive Reduction!

## RUNNING COSTS

Sewage in Maintenance Costs	No	AC in Maintenance Costs	No	Gardening in Maintenance Costs	No
TV in Maintenance Costs	No	Insurance Included in Maintenance	No	Pest in Maintenance Costs	No