

BÔVELL

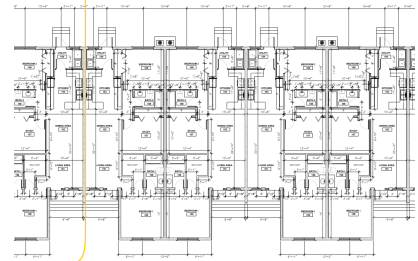


FOR SALE

KYD\$445,000

Current

The Landing Corner Unit - Pre-Construction



Welcome to The Landing in Spotts/Newlands! Ideally located just off Raven Avenue with easy access to the East-West Arterial Highway, you will enjoy seamless access to Grand Harbour, Countryside Shopping Village, and Spotts Beach. These modern units offer 2 beds, 2 baths, plus a spacious den/office and a separate laundry room.

Location: Spotts

MLS: 417894

Built: 2025



Contact James

james.bovell@bovell.ky

+1 (345) 945 4000

BÔVELL



2024 © RE/MAX Cayman Islands. All rights reserved. Proud member of CIREBA.

RE/MAX CAYMAN ISLANDS

Each office is independently owned and operated. Member of CIREBA and NARS.

The information contained herein has been furnished by the owner(s) and/or their nominee and represented by them to be accurate. RE/MAX Cayman Islands, its agents and employees disclaim any liability or responsibility for any inaccuracies, errors, or omissions in the represented information. All the information contained herein is subject to errors, omissions, price changes, prior sale, or withdrawal, without notice and is at all times subject to verification by the purchaser(s).

BÔVELL



FOR SALE

KYD\$445,000

Current

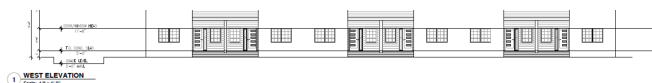
The Landing Corner Unit - Pre-Construction



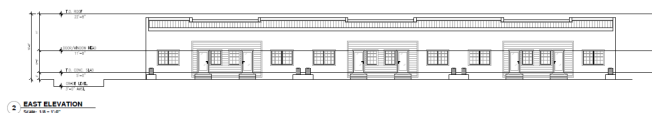
SAMPLE OF INTERIOR FINISHES



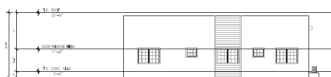
SAMPLE OF INTERIOR FINISHES



1 WEST ELEVATION
Scale: 1/8" = 1'-0"



2 EAST ELEVATION
Scale: 1/8" = 1'-0"



BÔVELL



2024 © RE/MAX Cayman Islands. All rights reserved. Proud member of CIREBA.

RE/MAX
CAYMAN ISLANDS

Each office is independently owned and operated. Member of CIREBA and NMLS.

The information contained herein has been furnished by the owner(s) and/or their nominee and represented by them to be accurate. RE/MAX Cayman Islands, its agents and employees disclaim any liability or responsibility for any inaccuracies, errors, or omissions in the represented information. All the information contained herein is subject to errors, omissions, price changes, prior sale, or withdrawal, without notice and is at all times subject to verification by the purchaser(s).

BÔVELL



FOR SALE

KYD\$445,000

Current

The Landing Corner Unit - Pre-Construction

- Central AC
- Dining Area
- Kitchen area
- Oven: Electric
- Stories: 1
- Washer/Dryer: Yes
- City Water
- Dishwasher
- Living Room
- Refrigerator
- Storm Windows
- Den
- Kitchen
- Microwave
- Septic
- Stove: Electric

ADDITIONAL INFORMATION

Furnished	No	Title	The Landing Corner Unit - Pre-Construction	Class	Pre-Construction
Construction	Block	Land Certificate	Not Issued	Floor Level	1
Stories	1	Foundation	Slab	Strata #	TBD

RUNNING COSTS

Monthly Maintenance Costs	CI\$1	Sewage in Maintenance Costs	Yes	AC in Maintenance Costs	Yes
Gardening in Maintenance Costs	Yes	TV in Maintenance Costs	Yes	Insurance Included in Maintenance	Yes
Pest in Maintenance Costs	Yes				

BÔVELL



2024 © RE/MAX Cayman Islands. All rights reserved. Proud member of CIREBA.

RE/MAX
CAYMAN ISLANDS

Each office is independently owned and operated. Member of CIREBA and NMLS