

# BÔVELL



## FOR SALE

USD\$915,000

Current

### QUEEN'S HIGHWAY, WATERFRONT PARCEL | 0.62 ACRE



Build Your Dream Home on This Exceptional Parcel of Land This stunning piece of property offers the perfect canvas for your dream home. Elevated at 27 feet and gently sloping down to 13 feet closer to the water, this solid site requires no pilings or major substructure work, keeping construction costs lower.

Location: East End

MLS: 419014



Contact James

[james.bovell@bovell.ky](mailto:james.bovell@bovell.ky)

+1 (345) 945 4000

# BÔVELL



2024 © RE/MAX Cayman Islands. All rights reserved. Proud member of CIREBA.

## RE/MAX CAYMAN ISLANDS

Each office is independently owned and operated. Member of CIREBA and NMLS.

The information contained herein has been furnished by the owner(s) and/or their nominee and represented by them to be accurate. RE/MAX Cayman Islands, its agents and employees disclaim any liability or responsibility for any inaccuracies, errors, or omissions in the represented information. All the information contained herein is subject to errors, omissions, price changes, prior sale, or withdrawal, without notice and is at all times subject to verification by the purchaser(s).

BÔVELL

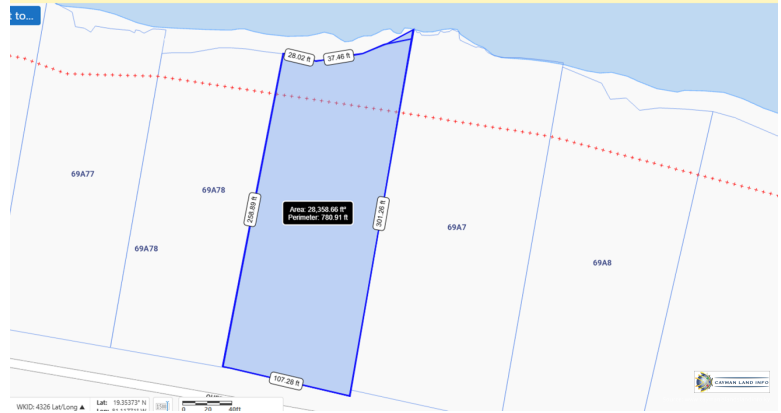


FOR SALE

USD\$915,000

Current

## QUEEN'S HIGHWAY, WATERFRONT PARCEL | 0.62 ACRE



BÔVELL



2024 © RE/MAX Cayman Islands. All rights reserved. Proud member of CIREBA.

RE/MAX  
CAYMAN ISLANDS

Each office is independently owned and operated. Member of CIREBA and NMLS.

The information contained herein has been furnished by the owner(s) and/or their nominee and represented by them to be accurate. RE/MAX Cayman Islands, its agents and employees disclaim any liability or responsibility for any inaccuracies, errors, or omissions in the represented information. All the information contained herein is subject to errors, omissions, price changes, prior sale, or withdrawal, without notice and is at all times subject to verification by the purchaser(s).

QUEEN'S HIGHWAY,  
WATERFRONT PARCEL | 0.62 ACRE

● Water Frontage

ADDITIONAL INFORMATION

Aprx Water Frontage	109.65	Title	QUEEN'S HIGHWAY, WATERFRONT PARCEL   0.62 ACRE	Land Certificate	Not Issued
Water Frontage	Yes				

RUNNING COSTS

Sewage in Maintenance Costs	No	AC in Maintenance Costs	No	Gardening in Maintenance Costs	No
TV in Maintenance Costs	No	Insurance Included in Maintenance	No	Pest in Maintenance Costs	No