

BÔVELL

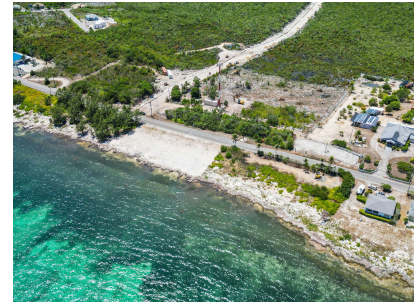
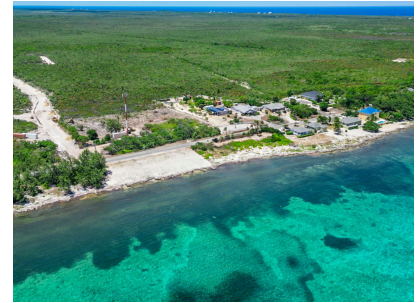


FOR SALE

USD\$428,000

Current

PRIME OCEANFRONT LAND - HOUSE LOT #1



A rare find in Cayman; Oceanfront lots FOR SALE priced under USD\$495,000. This very affordable OCEAN FRONT lot is spectacular with sloping elevations up to 16ft which allows for amazing sunrise views and views of the bright blue colors of the Caribbean sea.

Location: East End

MLS: 419017



Contact James

james.bovell@bovell.ky

+1 (345) 945 4000

BÔVELL



2024 © RE/MAX Cayman Islands. All rights reserved. Proud member of CIREBA.

RE/MAX CAYMAN ISLANDS

Each office is independently owned and operated. Member of CIREBA and MLS.

BÔVELL



FOR SALE

USD\$428,000

Current

PRIME OCEANFRONT LAND - HOUSE LOT #1



BÔVELL



2024 © RE/MAX Cayman Islands. All rights reserved. Proud member of CIREBA.

RE/MAX
CAYMAN ISLANDS

Each office is independently owned and operated. Member of CIREBA and NMLS.

The information contained herein has been furnished by the owner(s) and/or their nominee and represented by them to be accurate. RE/MAX Cayman Islands, its agents and employees disclaim any liability or responsibility for any inaccuracies, errors, or omissions in the represented information. All the information contained herein is subject to errors, omissions, price changes, prior sale, or withdrawal, without notice and is at all times subject to verification by the purchaser(s).

BÔVELL



FOR SALE

USD\$428,000

Current

PRIME OCEANTFRONT LAND - HOUSE LOT #1

ADDITIONAL INFORMATION

Aprx Water Frontage	71 ft	Title	PRIME OCEANTFRONT LAND - HOUSE LOT #1	Land Certificate	Not Issued
---------------------	-------	-------	---------------------------------------	------------------	------------

RUNNING COSTS

Sewage in Maintenance Costs	No	AC in Maintenance Costs	No	Gardening in Maintenance Costs	No
TV in Maintenance Costs	No	Insurance Included in Maintenance	No	Pest in Maintenance Costs	No

BÔVELL



2024 © RE/MAX Cayman Islands. All rights reserved. Proud member of CIREBA.

RE/MAX
CAYMAN ISLANDS

Each office is independently owned and operated. Member of CIREBA and NMLS.