

# BÔVELL



## FOR SALE

KYD\$390,000

Current

### #30 EXECUTIVE SUITES, PRIME LOCATION | 2 BED MIDDLE UNIT



PLEASE NOTE: PHOTOS AND THE VIRTUAL TOUR ARE OF A SIMILAR UNIT AND ARE PROVIDED ONLY FOR REFERENCE. BUT ALL UNITS HAVE A SIMILAR LAYOUT AND DESIGN! Executive Suites - Your New Home Awaits! Centrally Located Comfort and Style Welcome to Executive Suites, a premier gated community in the heart of Central Georgetown on Walkers Road, situated over 15ft above sea level, the highest point in George Town.

Location: George Town

MLS: 419073

Built: 2009



Contact James

james.bovell@bovell.ky

+1 (345) 945 4000

# BÔVELL



2024 © RE/MAX Cayman Islands. All rights reserved. Proud member of CIREBA.

## RE/MAX CAYMAN ISLANDS

Each office is independently owned and operated. Member of CIREBA and NMLS.

The information contained herein has been furnished by the owner(s) and/or their nominee and represented by them to be accurate. RE/MAX Cayman Islands, its agents and employees disclaim any liability or responsibility for any inaccuracies, errors, or omissions in the represented information. All the information contained herein is subject to errors, omissions, price changes, prior sale, or withdrawal, without notice and is at all times subject to verification by the purchaser(s).

BÔVELL

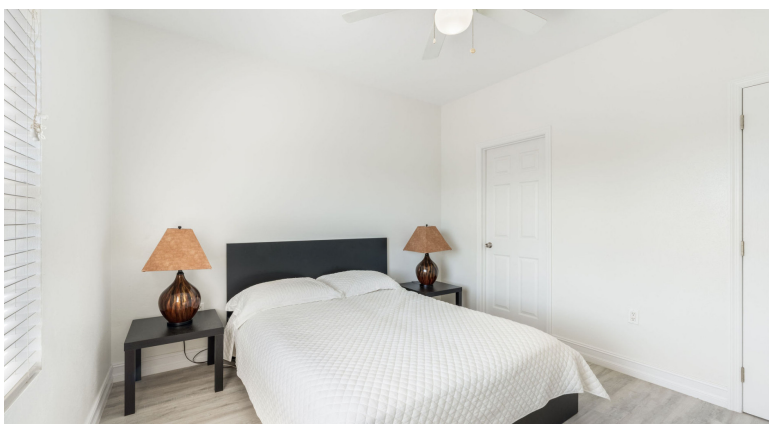


FOR SALE

KYD\$390,000

Current

## #30 EXECUTIVE SUITES, PRIME LOCATION | 2 BED MIDDLE UNIT



BÔVELL



2024 © RE/MAX Cayman Islands. All rights reserved. Proud member of CIREBA.

RE/MAX  
CAYMAN ISLANDS

Each office is independently owned and operated. Member of CIREBA and NMLS.

The information contained herein has been furnished by the owner(s) and/or their nominee and represented by them to be accurate. RE/MAX Cayman Islands, its agents and employees disclaim any liability or responsibility for any inaccuracies, errors, or omissions in the represented information. All the information contained herein is subject to errors, omissions, price changes, prior sale, or withdrawal, without notice and is at all times subject to verification by the purchaser(s).

#30 EXECUTIVE SUITES, PRIME  
LOCATION | 2 BED MIDDLE UNIT

- Cable TV
  - Dining Area
  - Kitchen
  - Microwave
  - Septic
- Central AC
  - Fence
  - Kitchen area
  - Oven: Yes
  - Utility Room
- City Water
  - Furnished: Yes
  - Living Room
  - Refrigerator
  - Washer/Dryer: Yes

ADDITIONAL INFORMATION

Furnished	Yes	Title	#30 EXECUTIVE SUITES, PRIME LOCATION   2 BED MIDDLE UNIT	Class	Existing
Total # of Units	54	Construction	Block	Land Certificate	Not Issued
Floor Level	2	Foundation	Slab	Strata #	1081

RUNNING COSTS

Monthly Insurance	CI\$285.19	Monthly Maintenance Costs	CI\$236.61	Sewage in Maintenance Costs	Yes
AC in Maintenance Costs	Yes	Gardening in Maintenance Costs	Yes	TV in Maintenance Costs	Yes
Insurance Included in Maintenance	Yes	Pest in Maintenance Costs	Yes		