

BÔVELL

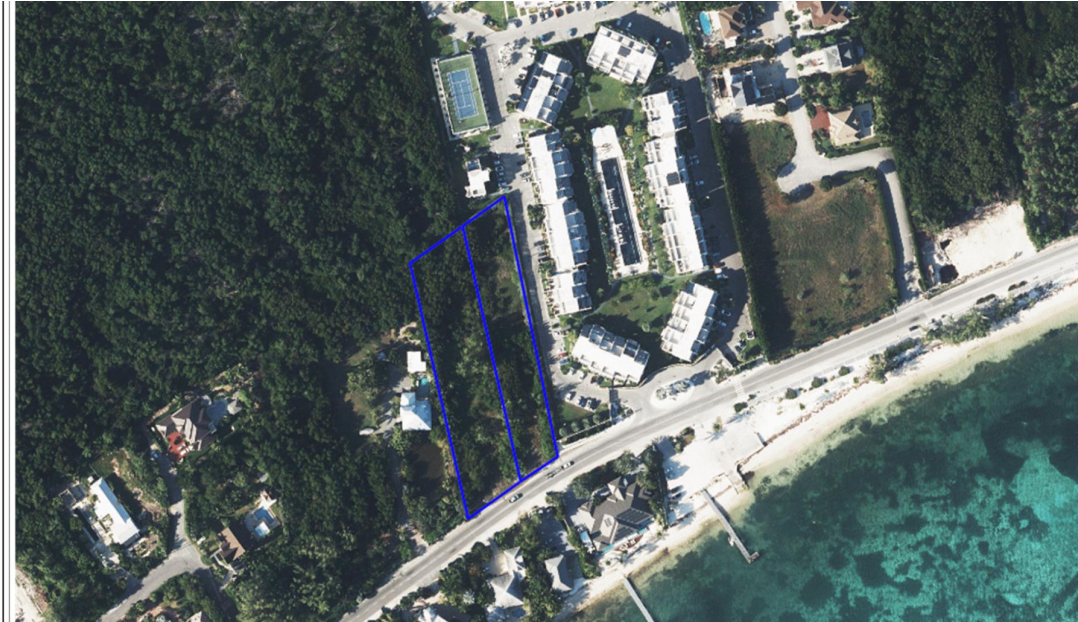


FOR SALE

USD\$3,063,000

New

## South Sound Development Parcel



Fantastic opportunity to develop this rare South Sound parcel, so many options to consider. An exclusive private home, a condo development, town homes another possibility or even a small boutique housing estate - this land is your oyster! Just minutes from George Town, a short walk to the local schools and shopping facilities, across the road from the sea, one does not get much better than this! \_\_ .

Location: South Sound

MLS: 419463



Contact James

james.bovell@bovell.ky

+1 (345) 945 4000

BÔVELL



2024 © RE/MAX Cayman Islands. All rights reserved. Proud member of CIREBA.

RE/MAX  
CAYMAN ISLANDS

Each office is independently owned and operated. Member of CIREBA and MLS.

The information contained herein has been furnished by the owner(s) and/or their nominee and represented by them to be accurate. RE/MAX Cayman Islands, its agents and employees disclaim any liability or responsibility for any inaccuracies, errors, or omissions in the represented information. All the information contained herein is subject to errors, omissions, price changes, prior sale, or withdrawal, without notice and is at all times subject to verification by the purchaser(s).

BÔVELL



FOR SALE

USD\$3,063,000

New

# South Sound Development Parcel

## ADDITIONAL INFORMATION

Title South Sound Development Parcel

## RUNNING COSTS

Sewage in  
Maintenance  
Costs No

AC in  
Maintenance  
Costs No

Gardening in  
Maintenance  
Costs No

TV in  
Maintenance  
Costs No

Insurance  
Included in  
Maintenance No

Pest in  
Maintenance  
Costs No

BÔVELL



2024 © RE/MAX Cayman Islands. All rights reserved. Proud member of CIREBA.

RE/MAX  
CAYMAN ISLANDS

Each office is independently owned and operated. Member of CIREBA and NMLS.