

BÔVELL



FOR SALE

USD\$4,250,000

New

# Palatial Shores Home on Double Lot



Palatial Home on Large Triangular Shaped Canal Front Lot in The Shores, One of Cayman's Most Exclusive, Gated, Canal Front Communities. Located in West Bay Near Morgan's Harbour, with Access to the West Bay Section of the Esterly Tibbetts By Pass, Offering Low or No Traffic Access to Seven Mile Beach and George Town.

Location: West Bay

MLS: 419502

Built: 2008



Contact James

james.bovell@bovell.ky  
+1 (345) 945 4000

BÔVELL



2024 © RE/MAX Cayman Islands. All rights reserved. Proud member of CIREBA.

RE/MAX  
CAYMAN ISLANDS

Each office is independently owned and operated. Member of CIREBA and NMLS.

The information contained herein has been furnished by the owner(s) and/or their nominee and represented by them to be accurate. RE/MAX Cayman Islands, its agents and employees disclaim any liability or responsibility for any inaccuracies, errors, or omissions in the represented information. All the information contained herein is subject to errors, omissions, price changes, prior sale, or withdrawal, without notice and is at all times subject to verification by the purchaser(s).



BÔVELL

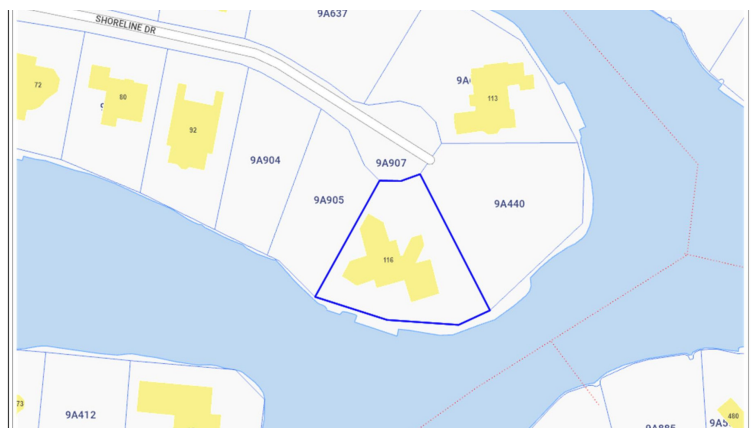
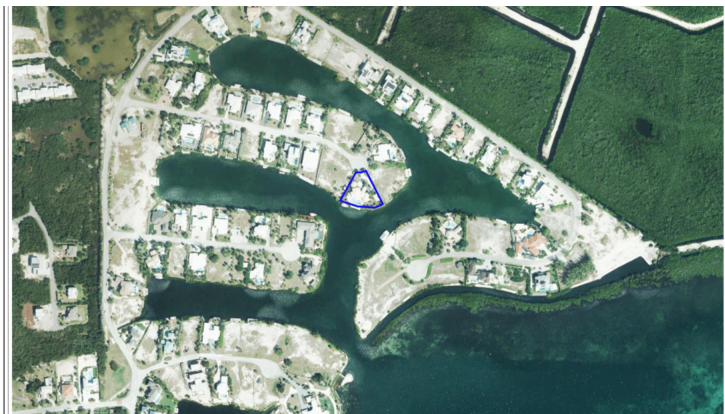


FOR SALE

USD\$4,250,000

New

# Palatial Shores Home on Double Lot



BÔVELL



2024 © RE/MAX Cayman Islands. All rights reserved. Proud member of CIREBA.

RE/MAX  
CAYMAN ISLANDS

Each office is independently owned and operated. Member of CIREBA and NARS.

The information contained herein has been furnished by the owner(s) and/or their nominee and represented by them to be accurate. RE/MAX Cayman Islands, its agents and employees disclaim any liability or responsibility for any inaccuracies, errors, or omissions in the represented information. All the information contained herein is subject to errors, omissions, price changes, prior sale, or withdrawal, without notice and is at all times subject to verification by the purchaser(s).

BÔVELL



FOR SALE

USD\$4,250,000

New

# Palatial Shores Home on Double Lot

- Bar
- Den
- Dock
- Garage: 2
- Library
- Outside kitchen
- Stories: 2
- Washer/Dryer: Yes

- Breakfast
- Dining Area
- Family Room
- Gym
- Living Room
- Oven: Electric
- Stove: Electric

- Carport: Yes
- Disposal
- Furnished: Yes
- Kitchen
- Multi-Zone AC
- Porch: Unscreened
- Utility Room

## ADDITIONAL INFORMATION

Aprx Water Frontage 218

Class Existing

Floor Level 1

Furnished Yes

Construction Frame

Stories 2

Title Palatial Shores Home on Double Lot

Land Certificate Not Issued

Foundation Slab

## RUNNING COSTS

Sewage in Maintenance Costs No

TV in Maintenance Costs No

AC in Maintenance Costs No

Insurance Included in Maintenance No

Gardening in Maintenance Costs No

Pest in Maintenance Costs No

BÔVELL



2024 © RE/MAX Cayman Islands. All rights reserved. Proud member of CIREBA.

**RE/MAX**  
CAYMAN ISLANDS

Each office is independently owned and operated. Member of CIREBA and NMLS.